

***2018 SEASON  
RULES AND REGULATIONS***



**WACKY  
WEDNESDAY**

***Modified Enduros, RoadRunners/Stunt,  
and Racing Stars of Tomorrow  
DIVISIONS***

Revised November 10, 2017

## TRACK PERSONNEL

Track Owner	Del Merritt (207) 989-1226
Head Scorer/Office	Kim (Baker) Allen (207) 356-9516
Pit Steward	Tammy Harlow (207) 631-0663
Safety Director	Wayne Elston (207) 848-5943
Tech Directors	Dave McCullough (207) 356-9141  John McCullough (207) 852-3342

## ADMISSION

<b>Grandstand 11 and over</b>	<b>\$5.00</b>
<b>Child 10 and under</b>	<b>FREE</b>
<b>PIT</b>	<b>\$10.00</b>

No rain checks after four races are completed

**PIT GATE OPENS 2 ½ HOURS BEFORE RACE TIME**

## **Rule Book Disclaimer**

The rules and/or regulations set forth herein are designed to provide for the orderly conduct of racing events and to establish minimum acceptable requirements for such events. These rules shall govern the condition of all events, and by participating in these events, all participants are deemed to have complied with these rules. No express or implied warranty of safety shall result from the publications of or compliance with these rules and regulations. They are intended as a guide for the conduct of the sport and are no way a guarantee against injury or death to a participant, spectator or official.

The race director shall be empowered to permit minor deviation from any of the specifications herein or impose any further restrictions that, in his opinion, do not alter the minimum acceptable requirements. No express or implied warranty of safety shall result from such alteration of specifications. Any interpretation or deviation of these rules is left to the discretion of the officials. Their decision is final.

Since it would be both impractical and impossible to list within the confines of any rule book all modifications, adaptations, and infractions that could be or would be illegal, it shall be understood for the purpose of rule book enforcement that only those items that are specified in this booklet are allowable and permissible. In addition, Speedway 95 holds the rights to fine, suspend, eject and/or withhold purse and points from anyone who violates these rules.

Motorsports at all levels pose a risk to your wellbeing. Following the rules set for by Speedway 95 in no way guarantees or suggests your safety.

### **Point System for All Divisions**

Feature winners in all divisions are awarded 100 points. Each position back is awarded two (2) less points than the previous position. Heat winners in all divisions are awarded 10 points for winning, and each position back receives two (2) points less than the previous position except 6th position receives one (1) point. No points are awarded for non-qualifier/consolation events in any division. Drivers must complete one lap under green flag conditions during a race meet to be eligible for points and purse. Points are awarded to the driver. Purse money is paid to the person listed on the information sheet for that vehicle under "Check payable to". Any other arrangements are between that person and the driver.

**Any discrepancy in points or finishes must be addressed within 2 weeks of event.**

**Competitor must compete in minimum of 3/4 of the scheduled race events to qualify for any trophies.**

Each car may run in one division only per night, and must have a number assigned specifically for the division to be run.

## NUMBER RULES

- 1) All numbers will be assigned by Kim 207-356-9516 (Text or call). An assigned number may be retained for the following season if the driver assigned that number competed in at least ten (10) race meets during the previous season and the driver is remaining in the same division. When changing divisions, a new number will be assigned.
- 2) A minimum of 18 in. high and 3 in. wide **block style** number is required centered on the door area of both sides of the car. A minimum 30 in. high, 3 in. **wide block style** number is required to be located on the roof of the car and it must be readable from the right side of the car. A 20 in. high and 3 in. wide number must also be located on the trunk, readable from the rear. Numbers shall be painted neatly in a color contrasting that of the car. Windshield numbers at least 5 in. high are required on the far upper right-hand side of the windshield. All A block style number as large as possible on the outer headlight and taillight covers is recommended. **Any car not following these rules will not be scored.**
- 3) Three digit numbers and fractions are not allowed. No new numbers will be issued with any number/letter combination.
- 4) All numbers must be kept in easily readable condition. If they are damaged in an accident, they must be fixed by the next race meet. Inability of the scorers to read numbers can result in the car being barred from competition until they are repaired to the satisfaction of head judge.

### LINE-UPS

All divisions will draw for heat starting positions. Car and Driver must be present at the time of drawing. Number of heats will be decided after draw takes place.

**Heats:** Cars will be lined up by order of draw position. Any driver who has not competed in an event in the selected division during the current season will start at the rear of the feature event.

#### **Features:**

- 1) Cars will be lined up by order of heat finish. The top 3 from the previous feature (not including series events will be lined up behind the rest of the group of drivers that qualified in the heats, regardless of where they qualified in the heats. Any driver who has not served the “penalty” for a previous top three finish will start the feature in the “penalty” position at the next race meet he or she competes in. Any driver who has not competed in an event in the selected division during the current season will start at the rear of the feature event, regardless of where they qualified in the heats. Any cars disqualified from the most recent race event will start behind new cars. Drivers who do not qualify in the heats will start the feature at the rear of the lineup.**
- 2) All feature and championship events shall be run the full number of laps regardless of restarts barring unusual conditions such as rain, darkness, or the lateness of the hour. Feature events shortened by unusual conditions will have been completed under green flag conditions. If the event is called while being run under caution, the last full lap scored will be used to determine finishing positions. To be in final results the car must be on the track, others will be scored according to the number of laps they completed. Final results will be determined by track officials.

- 3) **If in the event of an uncontrollable circumstance that a race cannot be completed in full that race will be considered official if the race is past the half way mark. if not past half way then the race will be resumed from the stopping point the following week**
- 4) In case of tie finishes where a clear and convincing winner cannot be determined, the purses and points for both or all positions in question will be pooled and divided amongst the drivers involved.
- 5) In the event of a double feature caused by unusual conditions during the previous race meet, those cars and drivers not present at the postponed race meet will start at the rear of the make-up feature.
- 6) No car will be allowed to compete in more than one heat race under any circumstances. No qualified car will be allowed in any consolation race.

## **GENERAL RULES**

Anyone who performs an act or participates in actions deemed by Speedway 95 officials to be detrimental to the sport or to Speedway 95 including, but not limited to verbal abuse of any Speedway 95 official, the consumption of or being under the influence of alcoholic beverages in the pit area during a race meet, the use of or being under the influence of drugs in the pit area during a race meet, fighting - which is defined as making or attempting to make physical contact or reckless operation of a race car or other vehicle in the pit area shall be disciplined appropriately by track management. Any person entering another pit area and causing conflict will be disciplined accordingly. Anyone who has signs of alcohol and/or drug use about their person will be asked to leave the premises. Any person using foul or abusive language toward any track official will be expelled without a refund.

Once a race vehicle is in the race arena, which includes the track, track shoulders, embankments or infield, and regardless of whether the racing action has been slowed or stopped, no driver shall exit his or her vehicle under any circumstances until authorized to do so by track officials or safety crew. The only exception to this rule is if the driver is in immediate danger from fire, hot fluids or other significant threat to his or her safety or well-being. Any driver disregarding this rule will subject to immediate suspension or other penalty imposed by track management.



## PIT RULES

- 1) All persons in the pit area are under the control of the Pit Steward. Disobedience of the Pit Steward's directives is cause for expulsion from Speedway 95 property. **Speed limit in the pit area is 5 mph for all vehicles.** Any speeding, pin wheeling or other such reckless conduct with any vehicle in the pit area will not be tolerated.
- 2) Everyone in the pit area must sign in at the pit gate and pay full admission price. Anyone under the age of 18, here after referred to as minors, must present a properly completed Speedway 95 Minor Release Form for the current year to the pit ticket takers and proof of paid admission before entering the pit.
- 3) **Any driver (other than Stars of Tomorrow drivers) that is under the age 18 of must have a valid and legal learners permit or driver's license. Any minor that is interested in racing must be approved by management. Do not assume because you want to race that you can. All minor drivers must be accompanied in the pit area by a legal parent.**
- 4) Only vehicles towing a stock car are allowed in the pit area. All cars must be self-starting in the pit area prior to participation in the race meet. **Personal Vehicles are NOT covered by any insurance in Restricted Areas.**
- 5) Any person who has signs of liquor, drugs or firearms about him/her during a race meet shall be removed from the premises for the remainder of the meet and shall forfeit all doctor's and hospital fees for any injuries sustained during the race meet at which the offense occurred. The vehicle on either side of the Offending party may also be asked to vacate the premises.
- 6) No racecar will carry more than one person at any time while it is in motion in the pit area or on the track. The only exception is during "Ride with your favorite driver".
- 7) No driver, owner, or mechanic will have any claim for damages, expenses or otherwise against track officials, owners, operators or promoters for disqualification, damage to car or driver, and agree that all conditions are safe when they participate in a meet.

- 8) If you are involved in an accident involving an injury to yourself, advise the racing officials immediately so that the necessary insurance reporting will be accomplished. Any person who refuses or does not seek medical treatment by the official medical team at the track forfeits any and all insurance protection.
- 9) **PIT TOWER ATTENDANT MUST BE NOTIFIED OF ANY CHANGE IN DRIVERS DURING A RACE MEET AND MUST BE NOTIFIED OF SAID CHANGE PRIOR TO THE RACE MEET.** If this is not done prior to the running of the race, the driver/owner shall forfeit all purse, points, and position for the race in which the offense took place. Offending cars and/or drivers may be barred from the next meet. There will be no exceptions to this rule. If a car is disabled, the driver is eligible to borrow a different car registered to race in the same division. **Pit Tower Attendant must be notified of the change as noted above.** If the borrowed car is determined to be illegal at the conclusion of the race, the driver borrowing the car and competing with it will lose any points or purse for that race meet only.
- 10) Management will review all disputes and infractions, and reserves the right to decide on any disciplinary actions to be taken. Decisions will be made and the offending parties notified prior to the next regularly scheduled meet.
- 11) Any incident not covered by these rules may be decided upon by management and made a rule for the rest of the season.
- 12) No tires are to be left at the speedway. Disposal of tires and oil is the responsibility of the driver. Violators will be fined and/or suspended.
- 13) Any cars left at the race track for more than 7 days after racing for that division., will be removed at the car owner's expense.

Speed limit in the pit is 5 M.P.H. for all vehicles. One warning, any repeat offenders will be penalized. First warning will be announced over the PA system. Subsequent offences will be verbally from a track employee or subcontractor.

## **ROADRUNNER RACING RULES**

**A red flag will be displayed in emergency situations. Yellow flags will be not be used. If a red flag is displayed prior to the completion of the first lap, all vehicles will be lined up in their original positions. On red flag stops, the vehicles will come to an immediate stop as safely as possible. When the green is thrown after the “Red Flag Stop” the cars will start from where they stopped.** Penalties will be assessed for vehicles moving during red flag. Any vehicle leaving the track during a red flag will remain in the pit for the remainder of that race. No passing on the original green until your vehicle has passed the start/finish line. On restarts, passing may be done anytime after the green flag is thrown. The first vehicle to complete the required number of laps under the green flag is the winner. Vehicles that are disabled but, in the race director’s opinion, are not in danger or posing a risk to other vehicles, will be left sitting where they are until the end of the race or a red flag is thrown, at which time they may be assisted to the pit area. All pit stops must be made in a safe and orderly manner, at a maximum speed of 5 M.P.H. in the pit area. Loss of a wheel or tire requires immediate exiting of the race track. Failure to do so will result in a disqualification. Vehicles may return to the race when repairs are completed. Return to the track at the direction of race officials posted at the entrance of the track on turn three.

Any discrepancies on the track must be dealt with in the pit.

**Radiator:** No Anti-Freeze allowed. KEEP KOOL™ or water only.  
Vehicles must have an overflow jug in working order.

**All vehicles must have front and rear tow hooks made of 1/2" rolled steel and installed as a vertical loop.**

**All cars must have tow hooks on front and rear.  
No Tow hooks means no racing.**

**No Chains & No Straps around the bumper.**

## **MODIFIED ENDURO RULES**

Vehicles must be street legal for make and model except for modifications made for racing allowed by these rules. Passenger car vehicles only. No convertibles, vans or trucks. No leaf spring vehicles. No All Wheel Drives. **No superchargers.**

**Engines:** 4 or 6 cylinder engines only. Any stock engine over 150 hp will not be allowed

**Wheel & Tires:** Wheel size must be stock for vehicle. Maximum 7" wheel.

All wheel studs and lug nuts must be in place. **NO RACING WHEELS.** Stock steel/or aluminum wheels only All wheels on the vehicle must be the same size and made of the same material, **Aftermarket steel wheels allowed, must be same width and offset as stock.** Tires may vary by one size side to side, for example: 175 on left and 185 on the right, but both tires on each side must be the same size. No directional tires. No recaps, 2-4 ply only. No liquid filled. **AIR ONLY.** Maximum allowable tread width of tires is 7". **Tires must have minimum 380 tread wear**  
**Buffing is allowed. No tire softener allowed.**

**Bumpers:** Bumpers must be at stock height for make and model of vehicle.

A bumper may be fabricated from thin wall square tubing, but must mount to stock mounts or to round tubing slipped over and bolted to stock mounts. All vehicles must have bumper covers to start the race. Rear bumper/bumper covers should be strapped to body or frame to eliminate dragging. Modified Enduro can run after market front and rear bumper covers, but must have stock bumper or replacement as noted above under it. Bumper covers must match make of car. A protection loop in front of the radiator may be added to the bumper, with one brace on each side attaching to the frame just in front of the radiator.

**Weight:** Left side weight rule 53% of total weight maximum.

## **No adding weight**

**Windshield:** Front windshield must be in place when racing. Windshield must be stock glass or Lexan™. All other glass i.e. headlights and marker lights must be removed from the vehicle before it will be allowed to compete. Rear side windows may be replaced with Lexan or sheet metal.

**Body/Frame:** All doors must be welded shut. No body alterations allowed **EXCEPT AS NOTED IN THIS SECTION**. All floor carpets and seats must be removed. Roll bar or four-point cage with door bars is **REQUIRED**. Dashboard may be removed for installation of roll cage only. Steering column must remain stock. Back of rear seat **MUST** be replaced with sheet metal. Fenders may be trimmed one (1) inch for tire clearance. No gutting of the interior metal except for installation of roll cage. No gutting of hoods, trunks or inner fenders. Hood and trunk lids must be on hinges. Tech will determine if too much has been removed and may require re-installation. Interior door panels may be removed for door bar and safety plate installation only. If an interior door panel is removed, there must be bars in that area that are attached to the roll cage.

If driver's doorplate is installed, it must be padded. .22ga. Steel may be used to replace doors, as long as door appearance remains stock and stock door contours are followed.

## **Lexan Rub Rails Allowed**

**Seat:** Aluminum racing seat required

**Seat Belts:** Racing harness must be used and must be approved by Safety Team.

**Helmet:** All drivers must wear a DOT approved helmet.

**Racing Suit:** **Fireproof racing suits and racing gloves are MANDATORY.**

**Battery:** Batteries **MUST** be placed in rear seat area in a box completely covering the battery.

**Brakes:** All vehicles must have four-wheel brakes in proper working order, **NO EXCEPTIONS.**

**Suspension: 2" maximum tire tilt on left and right front allowed.** One spring rubber allowed per car. Up to ½" rear wheel tilt resulting from weight removal allowed. No cambered rear ends. No lowering of the body on the frame. Left side ride height must be a minimum of 5 ½" and Right side must be a minimum of 6". Stock springs may be cut to achieve frame height. Springs must be same size wire. Sway-bar arrangement must be the same on both sides - stock length, with stock parts. No adjustable shocks, no racing springs, no adjustable cups. Stock style upper control arm replacements may be used. No angle type or offset type can be used. Ball joints must be welded to control arm.

**Gears/Transmission:** All running gears must remain completely stock for model and generation of vehicle. No 2 speed automatics.

**Rear End:** Open rear ends only. **NO LOCKED REARENDS. NO LOCKED FRONT ENDS.** No posi-trac. **Mufflers are mandatory.**

**Fire Extinguishers:** All vehicles must have an operative working 3# fire Extinguisher with gauge and mounted in a metal bracket within reach of the driver.

**Window Nets:** Window nets are mandatory with a working seat belt type hook.

**Radiator:** No Anti-Freeze allowed. KEEP KOOL™ or water only. Vehicles must have an overflow jug in working order.

**Tow Hooks: ALL CARS MUST HAVE FRONT AND REAR TOW HOOKS OR CHAINS EASILY ACCESSIBLE TO WRECKER CREWS.** No Tow hooks means no racing.

The track and its tow crews will have no responsibility whatsoever for damage resulting from towing a disabled vehicle from the racing area.

**Fuel Tanks:** Fuel cells and fuel tanks must be securely mounted in the trunk area. No cutting of trunk floor to lower fuel cell/tank in car. Boat Tanks must be in a canister of no less than .22-gauge steel. May have a loop to protect fuel cell, plated and welded to trunk floor.

**A four-point roll cage is mandatory as explained/diagramed on page 20**

**Anything not covered by any rules for this division shall remain stock as made by the manufacturer. Stock for year, make or “generation” of car must apply in all cases.**

**THE TECH COMMITTEE RESERVES THE RIGHT TO ADD OR SUBTRACT WEIGHT OR TO RESTRICT AIR FLOW TO THE ENGINE AT THEIR DISCRETION**

**Any alteration to any part of the car not specifically covered in these rules must be cleared with the technical inspector or it will be considered illegal. In other words, IF IT DOESN'T SAY YOU CAN DO IT, YOU CAN'T.**

**Any specification not covered by these rules may be decided upon by tech/ management, and made a rule for the rest of the season.**

**Disclaimer:**

**Motorsports at all levels pose a risk to your wellbeing. Following the rules set for by Speedway 95 in no way guarantees or suggests your safety.**

## RoadRunners/Stunt

previously 100% Enduros 4/6/8 Cylinder

Vehicles must be street legal for make and model except for modifications made for racing allowed by these rules. Passenger vehicles only. No convertibles, Full size vans, Full Size trucks, Chrysler Imperials, station wagon or full frame Oldsmobile Toronados. No leaf spring vehicles. No ALL wheel drive cars. **No turbochargers, No superchargers.**

Vehicles must be street legal for make and model, except for modifications made for racing allowed by these rules.

**Exterior:** Doors are required to be Welded Shut from the Exterior.

Exterior Piping **must be bolted** required as specified on diagram on page 17. **One bar must extend from front fender to rear door, top bar must be lower than the top of the fender. bottom bar must be separated from top bar.** No exception, not bolted no racing.

2 pipes on driver's side required spaced. All hubcaps must be removed.

**Vehicle must start the event with all body parts  
No gutting of interior at all.**

**Windshield:** Front windshield must be in place when racing. Windshield must be stock glass or Lexan™. All other glass i.e. headlights and marker lights must be removed from the vehicle before it will be allowed to compete. **No lights of any kinds will be allowed at any time.** Window Nets Mandatory

**Fire Extinguishers:** Operative 3# fire extinguisher with gauge mounted in a metal bracket within reach of the driver is required.

**Tires and Wheels:** Wheel size must be stock for vehicle either **steel or aluminum, no mixing.** All wheel studs and lug nuts must be in place. No directional tires. No recaps All tires on the vehicle must be the stock for the Make/Model of the car and same size/series tires all the way around, 2-4 ply only. No liquid filled.



**Seat:** All stock seats must be fastened in a stationary, upright position. Racing seat may be used with approved bracing. A hoop may be installed in car behind driver to protect driver from roof collapse. No bars extending from hoop to rear of front of car. X hoop



**Seat Belts:** Racing harnesses **MUST** be used and must be in good condition

**Helmet:** All drivers must wear a DOT approved helmet  
No altering of suspension.

Must keep Stock Exhaust

Battery must be in stock location and securely fastened.

All cars must have tow hooks on front and rear.

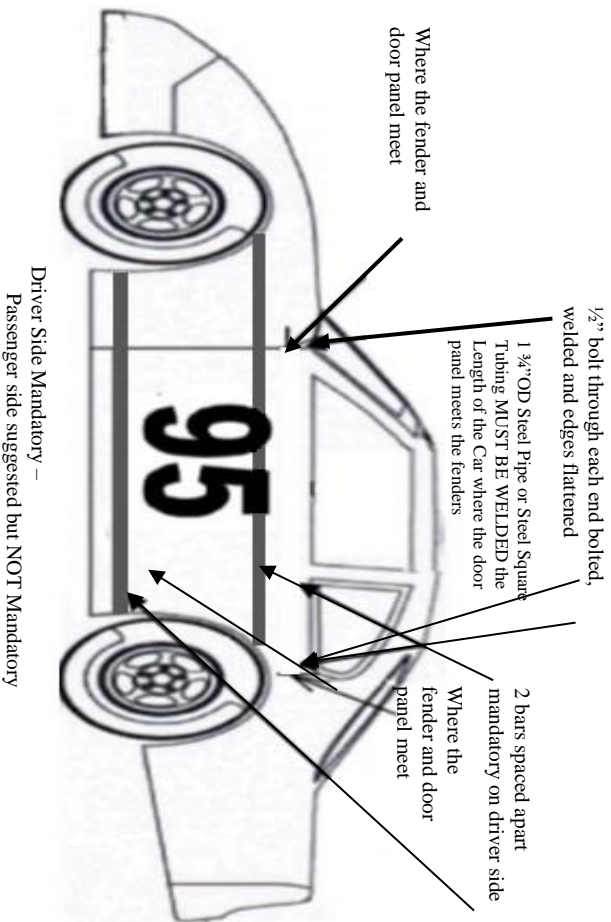
No Tow hooks means no racing.

The track and its tow crews will have no responsibility whatsoever for damage resulting from towing a disabled vehicle from the racing area.

Motorsports at all levels pose a risk to your wellbeing. Following the rules set for by Speedway 95 in no way guarantees or suggests your safety.

No Current Year Saturday Night Division Drivers will be allowed in this division

**Any cars left at the race track for more than 7 days after racing for that division. Will be removed at the car owner's expense.**



## **RACING STARS of TOMORROW**

### **Wednesday Nights Ages 10 – 15\***

\*Must not be more than 15 years of age throughout the racing season

**No driving participation allowed in any racing division other than Racing Stars of Tomorrow, either on Wednesday or Saturday race meets.**

**CERTIFIED** copy of Birth Certificate AND current notarized minor release form to be on file with Speedway 95 Promotions, Inc. for the whole racing season.

**ALL minor drivers must be accompanied in the pit area by a legal parent.**

1. 4 Cylinder Only
2. Fuel Cell REQUIRED
3. Saturday Safety Rules apply
4. Saturday Racing Rules apply
5. Four point roll cage REQUIRED (see page 17 & 18)
6. Full Racing Suit REQUIRED
7. Helmet REQUIRED
8. Gloves REQUIRED
9. Aluminum Seats ONLY
10. Right side head rest REQUIRED. Left Side OPTIONAL
11. Neck Collar REQUIRED
12. Racing Seat belts REQUIRED (five point harness)
13. Weight Rule:

2,200 lbs. or less 51% left side weight,

2,201 lbs. – 2,400 lbs. 52% left side weight

2,401 lbs. and over 53% left side weight

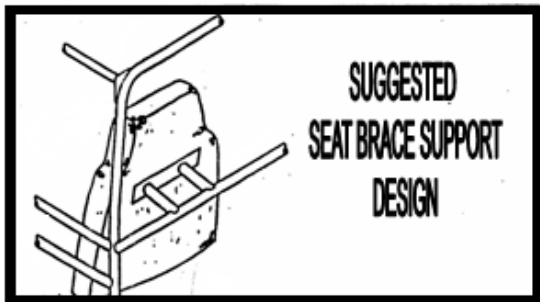
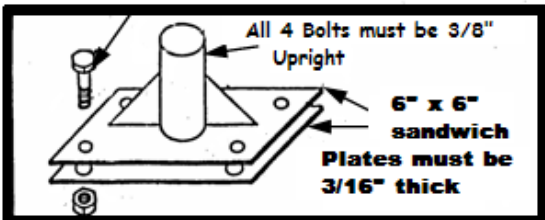
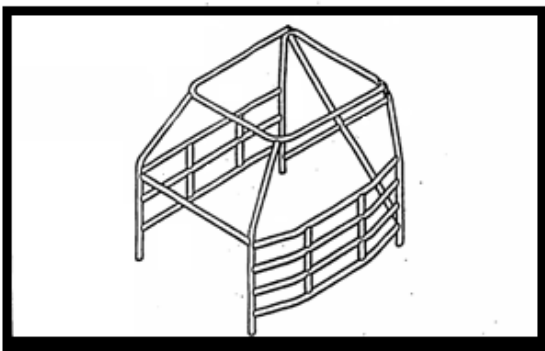
**After a driver has won 3 feature events in a season, 25 lbs. will be added to the car for each successive feature win.**

14. No body alterations allowed
15. **All other rules will follow Modified Enduro Rules**  
All cars must have tow hooks on front and rear.

## **ROLL CAGES**

- 1) A four-point roll cage is mandatory in MODIFIED ENDURO and RACING STARS of TOMORROW Divisions. If roll cage is used it must be approved by safety. A roll cage must consist of four uprights joined together at all four corners at the top. Tubing must be at least 1 ½" Round O.D. and minimum .090 wall thickness. All roll cages must be professionally welded.
- 2) An "X" must be placed between the rear uprights, or a horizontal bar may be used to join the two rear uprights at the bottom, with a diagonal bar joining the top and bottom horizontal bars.
- 3) Four bars running between front and rear uprights are required on the driver's side. These bars must be padded.
- 4) A minimum of three horizontal bars or an "x" is required on the passenger side of the vehicle.
- 5) A horizontal bar between the two front uprights just above or below the dashboard is required.
- 6) Forward or rearward bars attached to the main uprights are NOT allowed.
- 7) The roll cage may not reinforce the body or frame or alter the geometry of the vehicle.
- 8) Roll bars may NOT extend through firewalls.
- 9) All vehicles with frames must have the roll cage welded directly to the frame NOT the floorboards.
- 10) All vehicles without frames must use the sandwich method shown in the roll cage diagram to secure the roll cage to the vehicle.
- 11) May have rearward bars no further than firewall or center of strut towers

## SUGGESTED ROLL CAGE DESIGN



All cars must have tow hooks on front and rear.  
**NO TOW HOOKS MEANS NO RACING**

Each car may run in one division only per night, and must have a number assigned specifically for the division to be run.

No one allowed in Tech Garage unless Tech Official approved  
Anything not covered by any rules for this division shall remain stock as made by the manufacturer. Stock for year and make must apply in all cases.

**THE TECH COMMITTEE RESERVES THE RIGHT TO ADD OR  
SUBTRACT WEIGHT AT THEIR DISCRETION.**

**Tech has the option to give last place points and loss of award money to a car/driver that has an infraction to the rules that would not warrant a disqualification.**

**FOR EACH ITEM NOT MEETING SPEEDWAY 95 SPECIFICATIONS.  
THE TECH COMMITTEE MAY ADD OR SUBTRACT WEIGHT IN  
THE FAIRNESS OF COMPETITION**

Any alteration to any part of the car not specifically covered in these rules must be cleared with the technical inspector or it will be considered illegal. In other words, IF IT DOESN'T SAY YOU CAN DO IT, YOU CAN'T.

Any specification not covered by these rules may be decided upon by tech management and made a rule for the rest of the season.  
Motorsports at all levels pose a risk to your wellbeing. Following the rules set for by Speedway 95 in no way guarantees or suggests your safety.





Speedway 95 Promotions, Inc.

[www.speedway95racing.com](http://www.speedway95racing.com)

(207) 945-9595

Physical Address: 1070 Odlin Road Hermon Maine

Mailing Address: 26 Nottingham Way, Brewer, ME 04412